

♀ ON OUR WAY

Newsletter of the Women's Center
46 Pleasant Street, Cambridge, Massachusetts 02139

Telephone: (617) 354-8807

WINTER 1985

INTERNATIONAL WOMEN'S DAY EVENTS

CONFERENCE

ALLIANCE AGAINST WOMEN'S OPPRESSION
Boston Affiliate Chapter, P.O. Box 1091,
Jamaica Plain, MA 02130
"Voices of Struggle...Voices of Freedom"
Somos Hermanas and the Alliance Against
Women's Oppression invite you to partici-
pate in a half day conference celebrating
International Women's Day, 1985. Spea-
kers will include Ivy Matsope from the
African National Congress of South Africa
and a representative of AMES of El Sal-
vador. The conference will be held on
Sunday, March 3 from 12:30 - 5:30 at
Roxbury Community College, Room 307 of
the Kennedy Building, 625 Huntington Ave.,
Boston. Childcare provided. Bilingual
Spanish/English. Wheelchair accessible.
\$5 (sliding scale).
Information: 364-5938

SOJOURNEYS WITH BLACK WOMEN

"CLAIMING POWER: UNITING FOR CHANGE"
Margaret Burnam, lawyer and Sandra
Graham, Mass. State Legislature
Friday March 8 7PM Cambridge YWCA
A workshop follows Sat. March 9 10AM-1PM
Donation of \$3 - \$5 is requested

WOMEN'S VIDEO FESTIVAL

March 8,9 on Boston Cable TV ch 3 6-11PM
Entertainment, documentaries, with Shane
Snowden, editor Sojourner, Hyatt Iman,
Elizabeth Stone House, Donna Finn, and
other community activists and local en-
tertainers.

March 24 at SOMEWHERE 4-11PM

24 HOUR RADIO PROGRAM

WMBR - MIT 88.1

Sat. March 9 Midnight until midnight
March 10. Lots of music (women in jazz,
gospel, Libana), discussions, news,
and more! Schedule will be posted
around town.

"WOMEN WHO DARE"

**DORCHESTER INTERNATIONAL
WOMEN'S DAY CELEBRATION**
Saturday March 9 at the Grover Cleve-
land School (directly across from
Fields Corner subway stop - Ashmont Red
Line cars) Registration 9:30AM; work-
shops 10:30AM; Celebration (skits, sing-
ers, speakers) 2PM. (Ends at 3:30PM)

KAY GARDNER AND THE MISCHIEF MIMES

A Benefit Concert Saturday March 9 8PM
at Boston College Theatre (end of B.C.
green line) Presentd by Women of Power
Magazine Advance Tickets: \$6.50 at
Glad Day, Shambala, New Words and Body-
works Gym

THE WOMEN'S CENTER

PRESENTS:

INTERNATIONAL WOMEN'S DAY

DANCE

SATURDAY MARCH 9

8PM - 1AM

AT THE BOSTON YWCA

140 CLARENDON

CHILD CARE

REFRESHMENTS

INCEST RESOURCES

Incest Resources is a non-profit counseling and educational organization committed to promoting public information about incest and adequate services for incest victims and survivors. We were founded in January of 1981 by women with incest histories and are an affiliate of the Cambridge Women's Center.

Our current activities include a monthly drop-in discussion group, referral services for individual and group therapy, consultation and training, public speaking, and the distribution of literature written by our members and others.

Drop-in discussion groups meet 7:30 - 9:30pm on the third Thursday of every month at the Women's Center. Upcoming topics include: March 21 - Confrontation; April 18 - Relationships; May 16 - Mothers; and June 20 - Support/Endings. There will be a break for July and August and discussions will resume in September. For more information please call (617) 492-1818.

WOMEN'S SCHOOL

The Women's School's 15th annual spring term will begin in the middle of March. Classes and workshops include: visual images, self-defense, Southern Africa, Demystifying the Middle East, Breast Conditions, Down-Under Feminism, Graffiti, and many more. Watch for brochure at the end of February, or call the Women's Center at 354-8807.

JOB ANNOUNCEMENT

The Center is seeking a coordinator. 30 hours per week, \$7 per hour, and benefits. We are looking for a strong feminist committed to the liberation of all women, including women of color, older women, lesbians, poor and working class women, and differently-abled women. The position includes coordinating volunteer staff, contacting community groups, updating referrals, and crisis intervention. We are looking for a woman who has a long history of working for social change. Women of color and/or poor and working class women are especially encouraged to apply. For more information call 354-8807, or send letter of interest to: Hiring Committee, Women's Center, 46 Pleasant Street, Cambridge MA 02139. Deadline for letters is Friday, March 8.

SOJOURNER'S BACK!

SOJOURNER is publishing again! They have raised the money needed. We are so glad to have the paper back, and encourage everyone who reads and values it to subscribe. 1 year is \$15, to Sojourner, 143 Albany St., Cambridge, MA 02139. They need our support!

MATCHING GRANTS

The Center has been awarded \$9,875 in matching grants from foundations and corporations with the stipulation that we raise dollar-for-dollar matching contributions from the general public. To date, these public donations total just over \$2,000.

Money from matching grants is very crucial to the Center's survival, since it is used to cover operating expenses. We really need your help. Every dollar brings us closer to our goal and is very much appreciated. Please give all you can. Make your checks payable to: Women's Educational Center, 46 Pleasant Street, Cambridge, MA 02139.

VOLUNTEER

Many Women's Center groups need new members. Staff: 4hr day slots (10 - 2, 2 - 6), evenings (6-8, 8-10), as well as assisting with updating and expanding referrals, typing, etc. Introductory, Maintenance, Library, Newsletter, Battered Women's Directory, Fundraising Committee, to name a few. For more info call 354-8807.

AT THE WOMEN'S CENTER

NARCOTICS ANONYMOUS WOMEN'S GROUP

7:30 - 9PM every Monday

INTRODUCTORY MEETINGS

8 - 10PM every Wednesday

LESBIAN MOTHERS GROUP

8 - 10PM every other Wednesday

INCEST RESOURCES

7:30 - 9:30 3rd Thurs. every month

LESBIAN FAT LIBERATION

7:30 - 9PM last Tues. every month

LESBIAN LIBERATION

8 - 10PM every Thursday

JEWISH WOMEN'S OPEN DISCUSSION GROUP

7PM first Friday of every month
Potluck dinner, space for informal discussion. \$1.50 donation apprec.
Next meeting March 1

OUR THANKS TO ANDREA

Andrea Rogers, our Staff Coordinator for the past 6½ years, will be leaving the position the end of February.

Andrea started staffing here as an intern from Suffolk University and then became Staff Coordinator a year later.

She has contributed a great deal to the Center, a deep commitment to all women and to the Center and the Women's Movement.

She has been instrumental in creating a cohesive volunteer staff, expanding the referral system, and assisting literally thousands of women.

We will all miss her energy, dedication and sparkling sense of humor and wish her the best of luck!

RAPE CRISIS CENTER

The Boston Area Rape Crisis Center has been providing services to rape survivors, their friends and families and to the public at large for over 12 years. Our goal has always been to offer the best possible direct services combined with prevention and education programs. We serve the Greater Boston area and often receive calls from places all over the state and country.

The Center provides crisis intervention, a 24-hour hotline, counseling over the phone as well as in person, support groups, a referral network, personal support and advocacy through the legal process if necessary, public education to any groups who want to learn about rape, inservice training for professionals and agency consultation.

We have just finished our annual training of new volunteer counselors, and look forward to adding their energy to the group. We have also started a new structure for the group, involving a steering committee to expedite business. It is a time of upheaval for the group, as we try to find ways of dealing with the increased demand for our services, both for counseling and for public education.

We rely primarily on community and individual support for our survival. Our funding, from the Dept. of Public Health, is currently in jeopardy, and we are sorely in need of financial help. You can help through your interest and involvement in the form of written or spoken support of our program and/or a contribution to our organization. We welcome calls from people who are interested in being associated with us.

INTRODUCTORY

An open discussion group meeting every Wednesday at 8PM at the Women's Center. Upcoming topics: Feb. 27-Abortion; March 6-Money; March 13-Rape*; March 20-Anger*; March 27-Women at 30; April 3-Herpes and VD; April 10-Independence in Relationships; April 17-Incest; April 24-Sexual Harassment; May 1-Choosing Children; May 8-Women in the romantic novel; May 15-Food and fat issues; May 22-Ending relationships; May 29-Bisexuality.
*may be leaderless groups.

Introductory is looking for new members to facilitate groups. If you're interested in helping, please call Isreal at 491-5065.

NARCOTICS ANONYMOUS

A women's group of N.A. has started meeting at the Women's Center. It is composed of women who have stopped taking drugs and stopped drinking (a day at a time) and are trying to put their lives back together. The meeting is designed to help people regain their dignity and then go about putting their lives in order. Any woman who thinks she may have a drug or alcohol problem is welcome to attend. Meetings are every Monday, 7:30-9PM

WOMEN'S PENTAGON ACTION

The women of Women's Pentagon Action are presently reexamining our political priorities and redefining our goals. We are beginning by looking at our own views about feminism, women's liberation, racism and economics. Please join us in redirecting our selves.

MENOPAUSE COLLECTIVE

OPEN HOUSE/DISCUSSION OF MENOPAUSE
7 - 9pm April 10, 1985
at the
Women's Center

Come share your questions and feelings about menopause. For info. call 354-6015.

OLDER WOMEN'S LIBERATION

OWL is holding another CR group on aging currently at the Women's Center. Each group meets for 5 sessions. Each group defines its own topics. Examples of topics are: work, retirement, body changes, attitudes towards death, attitudes about aging.

WOMEN FACING CHALLENGES

Radcliffe Women's Film Series

FACING PHYSICAL CHALLENGES March 3

"Miles To Go"

ORGANIZING FOR CHANGE March 17

"How We Got The Vote" "A Woman's Place Is In The House" "Women's Voices: The Gender Gap Movie"

Science Center B, Harvard U. \$2

CONFERENCE ON BISEXUALITY

Saturday March 2, 9:00 AM at 1151 Mass. Ave. (Old Cambridge Baptist Church).

For information call 864-9054

MUSICIANS/PERFORMERS

The New England Women's Musical Retreat (NEWMR), to be held Labor Day weekend 1985, is seeking women from the north-east who are interested in performing on the Day Stage. Women of color, third world women, differently-abled women, and women of varying ages and ethnic backgrounds are encouraged to contact us. For information on audition procedures send name, address and phone number to:

Kim Kimber

NEWMR Day Stage Coordinator

PO Box 728

W. Hartford, CT 06107

BOSTON WOMEN'S THEATRE FESTIVAL '85

March 27-31, 1985 at the Boston Shakespeare Company 52 St. Botolph Street in Boston (behind Copley Place).

The plays will be written and directed by women from across the country. There will be panels with women playwrights, directors, theatre administrators, designers and technicians. To participate, contact: Sophie Parker, Festival Director, BWF '85 64 Wyman Street, Jamaica Plain, MA 02130 (617) 524-0971.

A CALL TO ACTION

PROTEST IN WASHINGTON DC, APRIL 19-22

Throughout history there have been times when it was necessary for people to gather to proclaim their vision of a just and peaceful nation. This is again such a time. As Reagan and his administration enter a second term, we call upon people from every corner of our country to join us in four days of protest and witness.

This action is being sponsored by many groups, both local and national. For more information call (617) 491-4214.

BLACK HISTORY MONTH CELEBRATION

For women of color

and everyone is invited.

Exhibitions, buffet, poetry, history, readings

7PM February 24 \$2 donation

10PM - 1AM DANCING (Tita Gray)

at Somewhere Else, 295 Franklin St.

UPCOMING

AND WHEN I WAS HUNGRY

Series sponsored by the Women's Theological Center (277-1330) March 17, 24:

Access to justice: Women Incarcerated

April 14, 21: Feminization of Poverty:

Women Struggling to Survive

CONFERENCE

A Conference on Battering For Mental Health Professionals Friday, March 29, 1985 8:15am - 5:00pm

A conference on battered women is being sponsored by Transition House, Respond, Waltham Battered Women Support Committee, and Help for Abused Women and Their Children. Each of these programs provides a safe and supportive environment, using the self help model, for hundreds of women fleeing violent home situations. The full day conference will consist of an opening address, several workshops, a wrap-up session, audio-visual displays (films, slideshows, etc.), and tables with literature from battered women's programs.

For more information, please call 354-2676

REPRODUCTIVE RIGHTS

BOSTON AFFILIATE During the past year, Boston R2N2 joined with several other Massachusetts organizations to form The Coalition for Choice, a network dedicated to defeating any attempts to restrict or outlaw abortion rights in this state. The main focus of the Coalition's work over the next two years will be to block a proposed "human life" amendment to our state constitution. This amendment could appear on the 1986 ballot as a referendum question. If passed, the amendment would immediately eliminate state Medicaid funding of abortion and potentially outlaw abortions in Massachusetts should federal laws change. R2N2 is a member of the steering committee of the Coalition for Choice and has launched several activities to support and expand the work of the Coalition. For more information please contact: R2N2 924-0271

♀ ON OUR WAY

Newsletter of the Women's Center
46 Pleasant Street, Cambridge, Massachusetts 02139

Telephone: (617) 354-8807
TTY AND VOICE

SUMMER 1985



WITH THE POWER OF EACH BREATH

The Women's Center and the Cambridge YWCA invite you to share in an evening of readings and discussion with Debra Connors, co-editor, and local contributors to WITH THE POWER OF EACH BREATH, A Disabled Women's Anthology, edited by Susan Browne, Debra Connors and Nanci Stern. This book, published by Cleis Press (June 1985) is the first to comprehensively document the lives of disabled women. It serves to bridge the gap separating disabled women from one another and from non-disabled women. Over 55 disabled women contributed poetry, fiction, biographical sketches, theoretical perspectives and a theatre piece dealing with common issues for disabled women.

Join us in the celebration of this publication on Tuesday, August 6, 8pm, at the Cambridge YWCA, 7 Temple St. (near Central Sq.). Donations are welcome. The building and restrooms are wheelchair accessible. ASL Interpreter will be provided. Please avoid scents/perfume, for some these are toxins.

IN THE BEST INTEREST OF THE CHILDREN

The Women's Center is deeply concerned about the welfare of children: over the course of many years we have seen too many children pass through our doors who have been the victims of abuse. We have also had a certain amount of experience with a few of the many, many children who are homeless. It is based on these experiences that we urge the Department of Social Services to take measures to provide more children with safe foster homes.

To do this, the state must look beyond what are perceived as "normal" homes because we must add that most - if not all - of those abused children whom we have seen at the Women's Center have come from those so-called "normal" homes where they have been victims of rape, battering or incest at the hands of men who might have been considered the "pillars of society". It has become clear to us that the criteria of heterosexual and married are meaningless in measuring a home's safety and stability.

There are gay men and women, on the other hand, who are able and willing to offer good homes. The recent uproar over the placement of two small children in a gay home and their subsequent removal by the Department of Social Services was supposedly done in the best interest of the children. Isn't it in the best inter-

Continued on page 2

Continued from page 1

est of those children to place them in any foster home that is safe, supportive and loving and with parents who want children in their lives? There are so many children who need good homes, and if the DSS were to exclude every home that is in any way different from the so-called norm, we would be left with very, very few homes, and many children alone and homeless.

We urge all those concerned with the welfare of children to make use of those resources the Lesbian and Gay community has to offer and to develop a policy that assesses gay families only by the same measure it assesses all potential foster families - by the measure of security and love they have to offer our children.



Photograph by John Tobin

Come visit us at 46 Pleasant St., at the intersection of Pleasant and River Streets near Central Sq., Cambridge. We have information on: upcoming events of interest to women in the Boston area and beyond, support groups for various issues, apartments to share, a library full of feminist literature and much more.

WOMEN'S CENTER HOURS

MONDAY - THURSDAY	10AM - 10PM
FRIDAY	10AM - 5PM
SATURDAY	10AM - 1PM
SUNDAY	CLOSED

DENMARK CAMPAIGN

An ad hoc group of social service workers is sponsoring an organized response to the recent Executive Office of Human Services policy statement which places gay and lesbian households "last on the list" of those being considered for foster care placements. In addition to denying children access to safe, loving foster homes, this change of policy has raised concern that further decisions based on bigotry and homophobia will occur, singling out gay and lesbian child care workers, parents, and teachers for officially sanctioned discrimination.

Groups and centers which serve children are endorsing a protest letter which pledges to protect gay and lesbian human service workers from identification and subsequent discrimination. If any effort is made to single out gays or lesbians, all members of the organization will claim to be gay men or lesbians. The letters of protest and solidarity will be presented as a group to Gov. Dukakis. So far, 45 groups throughout Massachusetts have joined the Denmark Campaign by putting the letter on their group's stationery, including shelters, child care programs, family violence crisis and counseling centers, and Y's. If you work in or live near a group serving children, or know of someone who does, you can help by lobbying the group to join the campaign. If you have any questions or would like to help, call the Women's Center at 354-8807 and leave a message for THE DENMARK CAMPAIGN.



ONGOING GROUPS

NARCOTICS ANONYMOUS WOMEN'S GROUP
7:30 - 9 pm every Monday

COMING OUT GROUP
7:30 - 9:30 pm every Tuesday

GENERAL SUPPORT GROUP
8 - 10 pm every Tuesday

LESBIAN MOTHERS GROUP
8 - 10 pm every other Wednesday

MENOPAUSE COLLECTIVE
5:30 - 9 pm 2nd Wed. every month

INCEST RESOURCES
7:30 - 9:30 pm 3rd Thurs. every month

LESBIAN LIBERATION
8 - 10 pm every Thursday



COMPUTER FOR THE CENTER

A computer committee has been formed to choose a personal computer for the Women's Center. We hope to use the computer to generate mailing lists, send out fundraising letters, organize our referral listings and library resources, and do accounting and bookkeeping. We hope to make a decision and a purchase soon, so that the workings of the Center can run more smoothly and better serve the Boston area women's community.

INCEST RESOURCES

Open to Women with Incest Histories Only
Third Thursday of each month 7:30 - 9:30

Sept. 19 -- Secrets
Oct. 17 -- Growing Up
Nov. 21 -- Parenting Ourselves
Dec. 19 -- Power

For Crying Out Loud subscriptions:

Write The Women's Center, 4 issues/\$5
(send less if you can't afford it).
Published by the Survivors Newsletter
Collective

BBWN

The Boston Bisexual Women's Network is a two-year old organization that is run by its volunteer membership of over 300 women. It originated from a small support group in Cambridge that suddenly blossomed into a network by reaching out to local communities. A newsletter is published every other month and currently, more than 500 women are on the mailing list. Every other month, there is an introductory meeting at the Women's Center where women can learn more about BBWN and join a support group. On alternate months, there are general meetings, held usually at Somewhere Else. Come explore BBWN! There are support groups, a coordinating committee, social events, study groups, political organizing, and community projects. All women are welcome to attend events, join a group and receive the newsletter at no cost. For more information, call 731-1399 until Aug. 6, then call 497-9555.

QUESTIONNAIRE

The Women's Center is thirteen years old and we have begun the process of thinking about our future directions. Please help us determine what changes need to be made by filling out the Women's Center questionnaire. Feel free to answer any or all of the questions.

We thank you for your time!



LIBRARY

The Women's Center Library is open to all women whenever the Center is open. Literature is available on a loan basis; however, many of the borrowed books have never been returned. We have been losing an average of 150 books a year! If you have library books that you have not returned, please bring them back so others can use them. We have a large collection of books, periodicals and pamphlets. The Archives of the Contemporary Boston Area Women's Movement is also housed at the Center and is available to be used by appointment.

The Library always appreciates donations of women's literature. They can be left at the Center for the Library Collective. We need more members! Please call 354-8807 and leave us a message.

WHEELCHAIR LIFT

We hope to have a wheelchair lift installed and operating by September! We also will be moving and altering the first floor bathroom, replacing thresholds, and reorganizing parts of the first floor of the Center. We still need some help with this work. Call 354-8807 if you'd like to volunteer a little time. This project has been made possible by your generous donations. We will have a celebration when it's completed.

UPCOMING EVENTS

Open House at NOW
August 7, 7:30 pm at Now
office 99 Bishop Allen Dr.
Cambridge

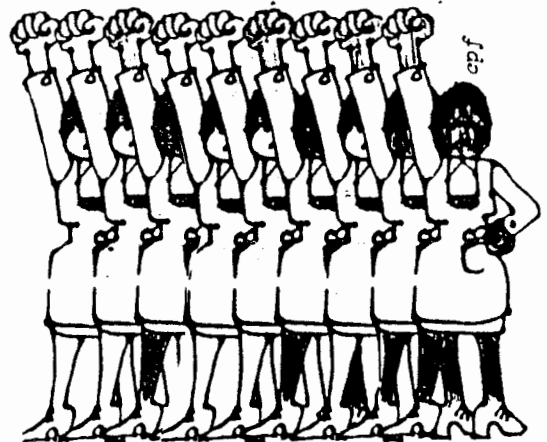
Womyn's CD action in
protest of the use of
nuclear weapons at Seneca
Army Depot . August 9-10

Michigan Womyn's Musical
Festival. August 8-11

New England Women's Musical
Retreat. August 30-Sept 2
Bethel, NY

A New England Conference
on New Directions For the
Peace Movement. October
5-6 at Boston College

Mobilization for Survival
is sponsoring "From Hiroshima
to Star Wars" an educational
program to commemorate the
40th anniversary of Hiroshima
and Nagasaki. August 7,
7:30 pm at Arlington St. Church
Boston



SUPPORT SOUTH AFRICAN WOMEN

There will be a rally on Friday,
August 9th, 12-1pm at the Deak-
Perera Office, 160 Franklin St,
downtown Boston, in celebration of
South African Women's Day. This
commemorates the day in 1956 when
20,000 South African women demon-
strated to oppose the pass book law.

FEMINIST DISCUSSION GROUP

The Wednesday night "Introductory Group" has been transformed into the "Feminist Discussion Group". More members are needed to get things rolling and to help facilitate. Meetings will be on Wednesdays from 7:30-9:30 pm, with such topics as "Women and Work", "What is Feminism", "New Reproductive Technologies", "PMS", "Body Images" and "Loneliness". We hope to start sometime in August. If you are interested in joining and/or have suggestions for topics, call Deb at 935-0611.

OPEN HOUSE

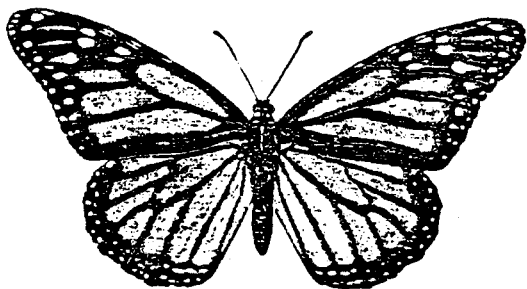
The Rape Crisis Center Outreach Committee will be sponsoring an Open House at the Women's Center for Cambridge neighbors on Saturday, September 21. Any women seeking more information can call 492-RAPE.

GENERAL SUPPORT GROUP

The General Support Group meets weekly on Tuesdays, 8-10pm. It is open to any woman who is looking for a basic support group. Call 354-8807 for more info.

LESBIAN LIBERATION

Lesbian Liberation has not been meeting during the summer, but will be restarting near the end of August. Announcements of the first meeting will appear in GCN and Bay Windows. Interested women can call 354-8807 for more information.



LESBIANS CHOOSING CHILDREN NETWORK

We are a support and information network for lesbians interested in having children biologically, by adoption, foster parenting or co-parenting. We meet once a month, usually with a presentation and discussion on a specific topic. Several smaller support groups meet periodically including groups for women thinking about or in the process of adopting, single parenting and decision making. There is also a support group for women trying to get pregnant and a large and active group for women who are already parents.

Topics for the next several months include artificial insemination, adoption, co-parenting, single parenting, grandparents, pregnancy and childbirth and legal issues. We invite all interested lesbians to join us, whether you have just begun to think about these issues or have already taken concrete steps towards making your decisions a reality. For more information or to be put on our mailing list contact the Women's Center.

FEMINIST CLUSTER

A new group meeting at the Center is the Feminist Cluster -- a collection of feminist and lesbian affinity groups and individuals affiliated with (but independent of) Pledge of Resistance. This group meets to plan and coordinate actions in the Boston area and beyond. The group welcomes all women interested in resistance actions, but meeting times are presently irregular. Call the Center for more information about planned meetings.



WOMEN'S SCHOOL UPDATE

The Women's School held two community meetings during June, in an attempt to determine its focus and importance to the Boston area's women's community. Both meetings were attended by about 15 women. On July 10, 1985, a group of women from these two meetings met to further discuss the future of the Women's School. We are struggling with these issues:

- o The Women's School in the changing political climate.
- o How to determine the women's community needs and the Women's School's response to those needs.
- o The structure of the Women's School
- o Free classes or tuition?
- o The fall term?

This group of women plans to meet every other Wednesday, at the Women's Center to consider these issues and to recreate The Women's School.

HIRING COMMITTEE

The Women's Center is looking for a new staff coordinator (deadline for letters of interest is August 5). A hiring committee has been meeting weekly to clarify the job responsibilities and to define the coordinator's relationship to others who work at the Center. We will soon begin the selection process. If you would like to be on the hiring committee, call 354-8807.

MATCHING GRANTS

YOUR DOLLAR IS DOUBLED

The Center has received \$9875 in grants from corporations and foundations which must be matched by individual donations from the general public. These funds will be used for operating expenses, paid staff, and house renovation projects. The Center needs your help to match these and future grants. Any amount will help. Please make checks payable to "Women's Educational Center, Inc."

BATTERED WOMEN'S DIRECTORY

The 9th edition of the Battered Women's Directory will be available the second week of August. It's been completely updated and new information has been added. The Directory has served the battered women's movement for 10 years as an indispensable tool in providing information and aid to millions of women suffering male violence. The 9th edition will be distributed from a new location. To order copies, send to:

Directory - Terry Mehlman
Box E-94 Price: \$12.00
Earlham College
Richmond, IN 47374

SUPPORT GROUP FOR BATTERED WOMEN

The support group offers help to women free of charge in an informal setting. Battered women can find new directions for their lives by sharing their concerns with others in the same situation and by exploring new ways of dealing with this all too common problem.

Groups meet twice weekly: Wednesday mornings 11:30, and Monday evenings, at 6:30. For further information call the Women's Center at 354-8807 or call 661-7203.

WOMEN'S CENTER QUESTIONNAIRE

1. Have you ever been to the Women's Center? _____
2. If so, have you used: the library job resource book housing resource book
 other (please list) _____

3. Have you attended meetings at the Center? _____ (please list) _____

4. Have you used the Center to find a referral? _____
What was it? therapist abortion clinic women owned business
 job counseling events/meetings
 other (please specify) _____

5. Was the information useful? _____
Comments (any details will be appreciated) _____

6. Have the Center's staffers been helpful? _____
7. Are you physically challenged? _____ If so, does it affect you use of the Women's Center? _____ How so? _____
8. What are the strengths of the Women's Center? _____

9. What are the shortcomings of the Women's Center? _____

10. Would you like the Center to have: (Check as many as you want)
 political discussions childcare
 more crisis counseling more job counseling
 more Open Houses more community coordination
 more support groups (specify) _____
 more social events (specify) _____
 information about _____
 workshops/courses on _____
 sports teams (which) _____
 more discussion groups (specify) _____
 Other _____
11. Would you be willing to help organize any of the above (including Other)? _____

12. Would you like to be more involved with the Women's Center? _____

13. What is your current involvement with the Women's Movement? _____

14. What are some of the current problems of the Women's Movement? _____

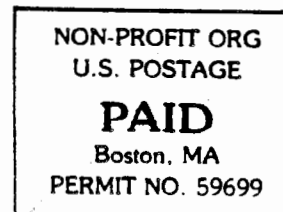
15. How can the Women's Center help to address these problems? _____

16. How can the Women's Center make their questionnaire more fun (less painful)? _____

17. Additional comments _____

18. If you would like to help us with any of the topics mentioned above, give us your phone number and we will contact you _____

THE WOMEN'S EDUCATIONAL CENTER, INC.
46 Pleasant Street
Cambridge, Massachusetts 02139
Phone: (617) 354-8807



Address Correction Requested

♀ ON OUR WAY

Newsletter of the Women's Center
46 Pleasant Street Cambridge Massachusetts 02139

(617) 354-8807

TTY and VOICE

AUTUMN 1985



Sophie Weasel, Chicago

WOMEN'S CENTER COORDINATOR

The hiring committee is pleased to announce that after almost a year of searching we have hired a new Staff Coordinator, Sharon Stonekey. Sharon has been working with the Boston Feminist paper, Sojourner, for the past year. Formerly, she was active in the Albany, NY, women's community where she worked with a Women's Prison Project and a community Women's Center.

We are very excited to have Sharon working with us.

TRACY

We'd like take this opportunity to express our appreciation for the work that Tracy VillaReale has done at the Women's Center. She has been the temporary staff coordinator for the last 9 months, keeping the place from becoming unglued while the seemingly endless hiring process was completed. She began working here at age 16 through the Somerville summer youth program and has staffed here almost every summer since. She has filled in over the past 6 years whenever the Center has needed her. She will spend the next month training the new staff coordinator. We greatly appreciate her dedication, sense of responsibility, energy, friendliness and caring, not to mention the substantial work she has done updating the referral listings and attending to the myriad of details involved in the day to day operation of the Center.

WOMEN'S SCHOOL

The Women's School is offering a weekend of varied workshops free of charge to all women, from Friday evening, Nov. 15, thru Sunday afternoon, Nov. 17. All workshops will be held at the Women's Center, 46 Pleasant St., Camb. (Red Line, Central Sq. stop). Registration will be held at the workshops. Childcare will be available at the Center. Additional workshops may be available during the weekend; call 354-8807 for further information.

GRAFFITI Fri., Nov. 15, 7-9pm & Sat., Nov. 16, 4-6pm

AFTER THE REVOLUTION: Women's visions of utopia Fri., Nov. 15, 8-10pm

NO EXPERIENCE NECESSARY: A Writing Workshop Sat., Nov. 16, 10am-2pm

WOMEN'S SUPPORT GROUPS IN THE WORKPLACE Sat., Nov. 16, 2-5pm

MESSAGE FOR THE NON-PROFESSIONAL Sun., Nov. 17, 10am-2pm bring lunch

WOMEN & POVERTY Sun. Nov. 17, 10am-1pm



OPEN FEMINIST DISCUSSIONS

Feminist Discussions are now for real!!
OPEN to all women, on Wednesdays, 8-10pm
at the Women's Center. Upcoming topics:
Oct. 30. Spirituality; Nov. 6. Racism;
Nov. 13, Exploring our sexual identities;
Nov. 20, Anger; Nov. 27, Mothers &
Daughters. Come on over and join the
fun! For more info. or to make topic
suggestions, call Deb, at 935-0611.

WHEELCHAIR LIFT

We are pleased to announce that the wheel-
chair lift is now installed and will most
likely be operating by the time you receive
this newsletter, as the final electrical
connections are happening now! We hope
women in wheelchairs who would like to
attend meetings at the Women's Center or
just visit will feel free to come over
(and use the lift). If you are interested
in attending a specific meeting, please
call and let us know a little early so we
can make sure the meeting happens on the
first floor.

COMING OUT GROUP

A coming-out support group has
been meeting every other Tues-
day from 7:30 to 9:30 pm at
the Women's Center. The group
averages eight women of varying
ages and backgrounds in an
informal setting. We have
found our shared thoughts and
feelings to be self-validating
and encouraging to others.
New members are always welcome
to discuss any topic of their
choice.



ONGOING GROUPS AT THE WOMEN'S CENTER

MONDAY

Support Group for Battered Women	6:30-8pm
Self-Help Group for Drug Addicts	7:30-9pm
Boston Bisexual Women's Network - open rap	7:30-10pm biweekly
Staff & Projects	8-10pm biweekly
New Women's Chorus	7-10pm

TUESDAY

Rape Crisis Center	7-10pm
Coming Out Group	7:30-9:30pm
Women's General Support Group	8-10pm
Former Nun Lesbian Support Group	7pm monthly

WEDNESDAY

Support Group for Battered Women	12noon-1pm
Women's School	7-9:30pm
Lesbian Mothers (childcare provided)	6:30-8:30pm biweekly
Menopause Collective	5:30pm monthly
Feminist Discussion Group	8-10pm

THURSDAY

Lesbian Liberation	8-10pm
Incest Resources	7:30-9:30pm monthly
Lesbians Choosing Children Network	7:30pm

Call the Center for more info.

MORDICA

Mordica, one of the two Women's
Center cats, and a resident since November
1972, died in late August of an enlarged
thyroid. She is survived by Tituba, the
other Center cat and all her many human
friends.

SPONSORED BY THE CAMBRIDGE COMMISSION
ON THE STATUS OF WOMEN

A PUBLIC HEARING:

POVERTY in CAMBRIDGE its impact on Women & Children

Thursday, Nov. 21 City Hall 6 - 10 pm
linking issues joining hands making changes

Contrary to the currently popular myth that Massachusetts has a booming economy, poverty persists and grows in Massachusetts each day. In Cambridge, while we watch high-rise luxury office space spread into our neighborhoods, children go hungry and families are homeless. As the legislature and governor prepare to return a large surplus of funds to the "taxpayers" in this election year, both branches of state government require women raising children on AFDC to subsist on a welfare grant 40% below the federal poverty level.

The Cambridge Women's Commission is a founding member of a statewide coalition, The Women's Campaign for Social Justice. The campaign is identifying and challenging poverty in Massachusetts, particularly as it affects women and children. We're focusing also on the poverty created by racism. You may also have heard of our first campaign: to get the governor and legislators to bring the Massachusetts welfare grant up to the federal poverty level, the "Up to Poverty Campaign"

As part of the Women's Campaign for Social Justice, the Women's Commission will hold a public hearing in Cambridge: Poverty in Cambridge -- its Impact on Women and Children on Thursday, Nov. 21 at City Hall, 795 Mass. Ave., 6-10pm. We need you and your organization to help us complete the planning for the hearing. We will hold a planning and organizing meeting on Friday, Nov. 1, 12:30-2pm at Cambridge City Hall, Ackerman Room, 2nd floor.

The goals of the hearing are simple: to bring real poverty in our city to the attention of every neighborhood, elected officials and community organizations.

We want to look at the interlocking issues which create poverty; low wages, underfunded nutrition, aging, teenage pregnancy and access to education, disability, racial discrimination and others. As we face cutbacks, we can join with each other for new strategies to challenge poverty and create hope.

We need the concerns which you and your organization bring to these issues. If you cannot come to the planning meeting, please contact the Cambridge Women's Commission, 57 Inman St., Camb. 02139 or call 498-9014.

WOMEN'S PENTAGON ACTION

Greetings from former members of Boston Women's Pentagon Action!

Sadly, Boston Women's Pentagon Action quietly passed away as an organization last May when women stopped attending meetings. We would like you to acknowledge the end of BWPA and recall its personal and political significance during an afternoon of film, talk and food on Sunday, November 10 from 3-7pm at the Women's Center.

We hope to show the film of the 1980 Women's Pentagon Action in Washington, D.C., discuss what to do with the remaining money, trade WPA stories and talk about our present work. Hope to see you there! Please spread the word among women you know who were part of WPA during its 4½ year lifespan. Bring food and drink to share.

If you want more info or want to send greetings or ideas if you can't be there call Julie O. at 547-2645(eves) or Nancy at 492-1091(days), or send a note to WPA c/o Julie Ogletree, 80 Kirkland St. Cambridge MA 02138.



OLDER WOMEN'S LEAGUE

The Older Women's League of Greater Boston, in cooperation with The Women's Center, is sponsoring a Consciousness Raising Group on Aging. As older women we realize that many of our problems result from living in an ageist society. This awareness group will help us see, through shared insights, how the attitudes and problems of society have affected us. We will listen to each other and be listened to in turn. The group will meet for a brown bag supper and discussion for five consecutive Monday evenings at 6:30 pm starting November 19 at The Women's Center. Enrollment is limited to 10 women over the age of 40. For further information, call Sandra Wayne, 232-7477, (noon-10pm) or leave message on machine.



graphic : Jacqui Linaud

INCEST RESOURCES

Open to women with incest histories only.
November 21 - Parenting Ourselves
December 19 - Power

LESBIAN MOTHERS

Nov. 13 - Out or not out
Dec. 4 - Open forum
Dec. 18 - Alone as a lesbian mother
with kids at home.
Jan. 8 - Open forum

VOLUNTEERS

If you would like to join the Women's Center staff (women to staff 10am-2pm or 2pm-6pm weekdays especially) or do other work there (library, maintenance, sewing, newsletter, etc.) call 354-8807.

WOMEN'S CENTER HOURS

Monday-Thursday 10am - 10pm
Friday 10am - 5pm
Saturday 10am - 1pm

THE FEMINIST CLUSTER

The feminist cluster is a network of feminist non-violent activists, the majority of whom are members of women's affinity groups. It was formed in 1983 to create a forum for women to plan and coordinate actions, discuss issues raised by engaging in nonviolent direct action, to facilitate the formation of women's affinity groups and coordinate training of women interested in learning about nonviolent techniques.

Meetings are scheduled as needed, through the initiation of a telephone tree (comprised of affinity group contact women and interested individuals).

The cluster has primarily focused on military targets, although individual affinity groups within the cluster also have organized against sexist and racist exploitation and apartheid. Although many participating affinity groups are mostly lesbian, the cluster welcomes all feminist nonviolent activists.

At a recent feminist cluster picnic we agreed to use the phone tree as a resource for those interested in planning educational discussions, study groups, and actions. The cluster does not meet on a regular basis.

To get on the phone tree please call: MaryanneKirkbride 522-7466 or Vicki Dow at 628-4382.

SUPPORT GROUP FOR BATTERED WOMEN

The support group offers help to women free of charge in an informal setting. Battered women can find new directions for their lives by sharing their concerns with others in the same situation and by exploring new ways of dealing with this all too common problem.

Come to the Women's Center any Monday at 6:30pm or Wednesday at noon. For more info call 661-7203 or 354-8807.

QUESTIONNAIRE RESPONSES

We asked for your help in evaluating the Women's Movement and the Women's Center, their strengths and shortcomings, with a questionnaire. We appreciate the praise, ideas and suggestions on how the Movement and the Center are filling your needs and how we can improve. Here are some of the responses:

Strengths of the Women's Movement

"The support to encourage women to move ahead and take charge of their own lives, growth and development for the sake of themselves, not for others"

"Ability to reach across boundaries of age, race, physical abilities, sexual preference, class. Ability to know + feel + support + grow."

"Support for each other"

"Struggle for freedom"

Current Problems of the Women's Movement

"Diverse focus and age range"

"Need to keep working in coalition"

"There are so many groups"

"Lack of communication"

"The women in the movement dump on it because they take it for granted"

"Factional. Each separate group's insistence that their political analysis is The Right One."

Role of Women's Center in the Movement

"Foster cohesiveness, provide meeting ground for different interests and politics"

"Just be there"

"Just keep surviving, and spreading the word about what women are doing, and helping to keep women finding each other and supporting each other"

Many people said, essentially, "thanks for being there" and felt that our continued presence has been our greatest strength over the last 13 years. The most frequently used areas of the center were groups & meeting rooms, the housing to share and job books, referrals and the bulletin boards.

Strengths of the Women's Center

"good clearinghouse for resources and information"

"free support groups (helped me to survive)"

"openness, versatility"

"comfortable atmosphere, good space for meetings and classes"

"place to organize activities"

"good notice board, library"

"ON OUR WAY keeping me informed!"

Shortcomings of the Women's Center

"limited outreach"

"it's not well known (need more community education about resources there)"

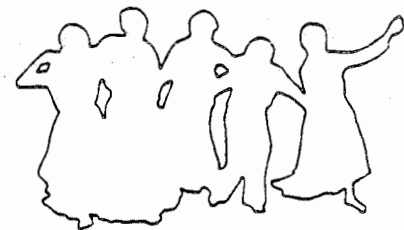
"not connected to other organizations"

"not accessible"

"not extremely warm environment to walk into the first time"

"somewhat loose organizational structure"

The outreach issue has been a priority with the hiring committee while selecting the new staff coordinator. Some ideas on how to make the center more friendly are being kicked around, but those of you who use the center are probably the best source of suggestions. Let us know if you have a specific idea on outreach techniques or how to make women feel more welcome at the Center.



How to Make the Questionnaire More Fun

"have us draw a cartoon"

"leave a space for doodlings and drawings" (Send us your drawings for the newsletter!!)

"Why does everything have to be fun?"

"It's been fun"

"ask us what we do in bed"

GENERAL SUPPORT GROUP

The General Support Group for women meets weekly on Tuesdays from 8-9:30pm at the Center. An open forum of discussion includes such issues as dependency, inter-dependency, self-sufficiency, self-image and self-confidence in family, career, and intimate relationships and situations. Goal setting and discussion of progress is done at each meeting by participants. Contact: Milly Holmes, 492-9079.

LESBIAN LIBERATION

Lesbian Liberation is an open discussion group for women to discuss issues of concern to them as lesbians. The group is open to all women of all ages who identify as lesbians or are unsure of their identity. The topics discussed are chosen by the group. For the past year, very few women have participated in Lesbian Liberation. The Center is presently attempting to revive it.

Young women, Old women, Women of color -- please come!!! We need your vitality! The group meets every Thursday 8-10pm at the Center. For mor info. and to offer suggestions, please call Debbie, 469-4057.

NEW WOMEN'S CHORUS

Originally called Red Choral Bells, what is now the New Women's Chorus began rehearsing together over 7 years ago in a Chorus member's basement. We are a collectively run chorus. Our music expresses what is important to our lives as women---our hopes, our fears, our visions for the future. We sing at rallies, in the streets, in the subway, at benefits and events such as International Women's Day and World Fellowship.

At present we have seven members and are looking to expand. We will be announcing auditions for New Women's Chorus in the near future. For more information about the Chorus or about auditioning call Jennifer at 524-8664.

LESBIAN NUN SUPPORT GROUP

This past April Rosemary Curb, one of the editors of Breaking Silence: Lesbian Nuns, and two other contributors to this anthology read their stories at New Words Bookstore. A response from the audience was one of gratitude to these women for courageously 'coming out' as former lesbian nuns. Several former nuns who had had lesbian experiences in the convent expressed a sense of relief knowing that they were not alone and showed an interest in developing a former nun, lesbian support group in order to network with other women who had had similar experiences.

Thanks to the Women's Center this support group is now meeting at the Center on the first Tuesday of the month at 7pm. At this time we are in the process of defining who we are and we would like to encourage other lesbians who have been affiliated with religious life to become members.



LESBIAN TEACHERS

The Lesbian Teachers Support Group is a new group as of fall '85. It meets on alternate Wednesdays from 7-9pm. The format of the group is flexible to the needs of the women who come, ranging from support and validation to discussions of the issues that affect us as lesbians in education, to just being a place to meet and socialize with other lesbian teachers/administrators. Please feel free to call 497-1311 for more information.

UPCOMING EVENTS

Holly Near will return to Boston for a rare solo performance on Saturday, Nov. 2 at the Orpheum Theatre at 8:00pm. Tickets are \$10.50, 12.50 & 14.00. The concert, produced by Boston Mobilization for Survival, will be opened by folk band, Bright Morning Star and will be interpreted for the hearing impaired. The Orpheum is wheelchair accessible. For more info. call 354-0008.

PURPLE PASSION: Love stories of older women told by Jay Goldspinner. Sat, Nov. 2, 8pm, cave under New Words 186 Hampshire Street, Cambridge. Donation \$5(more/less). Info and reservations 666-2615.

Scenes from the Country and Other Exotic Places -- Gallery showing by Eileen Kennedy at The Rising Phoenix Gallery, 244 Columbia St., Camb. Opening for women only, Nov. 3, 1-4pm to benefit Lesbian Land Project. Info.: 492-7522.

SOJOURNER

THE BOSTON WOMEN'S NEWSPAPER
celebrates its 10th anniversary
with a benefit reading by
TILLIE OLSEN

7:30pm Wednesday November 6 at
Saunders Theatre, Harvard U.
\$5 donation/advance: \$6/at door
Call 661-3567 for info

First Night of Solidarity

Come together for an evening of ethnic food and live entertainment as we share our work, celebrate recent victories and enjoy a cultural evening together, Saturday, November 9, 6:30pm (dinner at 7). Mass College of Art Cafeteria, 625 Huntington Ave., Boston. \$5 (more or less) incl. dinner & entertainment. Organized by: ALAS, City Life, R2N2, GCN, Nat'l Lawyers Guild, Black & White Men Together, & Casa El Salvador Farabundo Marti.

Angry Arts Film Series

"Abortion - Stories from North & South" and "The Business of Hunger" at the Cambridge YWCA, 7 Temple St. near Central Sq., Nov. 15-17 at 7:30pm. Donation: \$2.75. Info.: 625-9279.

PUBLIC HEARING ON POVERTY IN BOSTON
November 20. Call 354-8807 for info.

FOSTER EQUALITY UPDATE

The Gay and Lesbian Defense Committee continues its Foster Equality Campaign, aimed at overturning the state's new foster care policy, which effectively bans lesbians and gays from serving as foster parents. Also, because the first stage of adoption is considered to be a foster placement by the state or any agency accepting state funds, adoption is now also virtually impossible for lesbians and gays.

GLDC's Dukewatch "dogs the Duke", showing up wherever Governor Dukakis does, to protest this policy. On Oct. 26, Dukewatch broadens its scope for a Birdwatch, assembling at 11:00 a.m., at Cardinal Law's home in Brighton, 2101 Comm. Ave., to protest his recent homophobic statements.

GLDC is in the process of planning two other events, a community forum on strategies for gay resistance, Nov. 22, and for Nov. 25, an action involving alternative hearings, presentation of testimony from the state hearings and other evidence against the policy, to Gov. Dukakis, who remains determinedly uninformed about it. For more information, or if you have any tips on the Governor's schedule, please call 628-6007.

GLAD

GLAD, Gay & Lesbian Advocates and Defenders, is asking for names and addresses of people who you think would be interested in learning about and supporting GLAD's work, so that they can send them GLAD Briefs and information about joining. GLAD's mailing list is held in complete confidence and is never traded or sold. Write to Park Square Advocates, Inc., GLAD, P.O. Box 218, Boston, MA 02112 or call 426-1350.

THE WOMEN'S EDUCATIONAL CENTER, INC.
46 Pleasant street
Cambridge, MA 02139

NON-PROFIT ORG
U.S. POSTAGE

PAID

Boston, MA
PERMIT NO. 59699

Address correction requested

Transition House, a shelter for batter-women and their children, urgently seeks a fundraiser. It is a multi-cultural women's collective. Women of color especially encouraged to apply. For more info call 354-2676.

OSTEOPOROSIS/MENOPAUSE INFO PACKET AVAILABLE

A collection of articles and bibliographies compiled by members of the Menopause Collective is available for \$5. Send to Kanta Lipsky, 34 Speridakis Terrace, Camb. 02139. For further info about self-help groups or open houses on this topic, call 354-6015.

WOMEN IN THE WORKPLACE

Women in the Workplace, a conference sponsored by the Commonwealth of Massachusetts, will be held Friday and Saturday Nov. 8 & 9th at Northeastern Univ. This first annual conference will bring together working women, representatives from government, unions, business, academia, and women's organizations to identify the barriers working women of all racial, cultural, and economic backgrounds face in the workplace, and to develop positive solutions for change in Massachusetts. Workshop topics will include occupational safety and health, economic, and social issues. For more info, contact Cynthia Daniels at 727-0941.

PROJECT PLACE

Project Place is a volunteer counseling center offering a 24 hour hotline, face to face counseling and a drop-in center for the homeless. We offer our volunteers training, supervision and a supportive community. Project Place needs volunteers. Come and join us. If interested or have questions call Place at 262-3740.

MADRE FUNDRAISER

WOMEN: Dance up a storm and do all your holiday shopping at the women's dance and craft fair on Friday, November 22, from 8pm to 1am at the First Congregational Church in Cambridge. Sponsored by Madre, this is an alcohol/drug free space for women. D.J. for the evening will be Claire Francis. All proceeds to go to Madre, a fundraising organization for a hospital for women and children in Nicaragua. Madre is a feminist collective that is affiliated with CASA, the Central American Solidarity Association.

Admission: \$4 donation. Refreshments and snacks will be sold along with the works of local craftswomen and artisans. The church is at 11 Garden St. in Harvard Square. Info: 522-7884